



GENESIS

Rotary screw air compressors

Hp 7,5 - 10 - 15

The complete compressed air workstation

ABAC rotary screw compressor air end

GENESIS screw compressor encapsulated air ends are designed and built exclusively at the ABAC factories, certified ISO 9001.

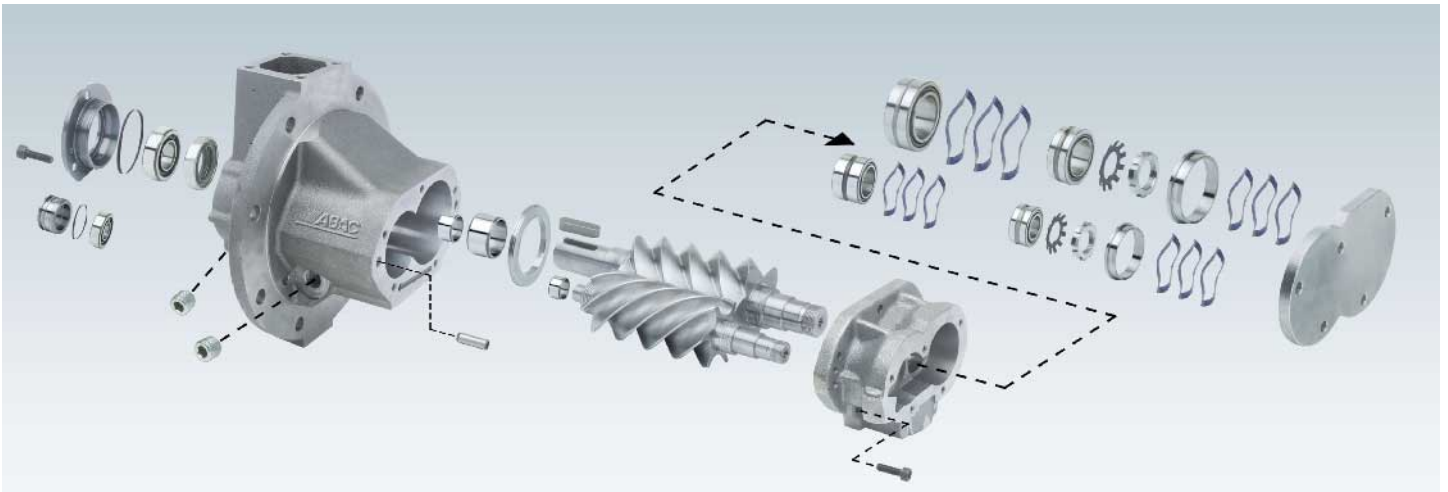
Throughout the manufacturing process the highest quality standards are strictly maintained.

The factors that determine the very high reliability of this compressor air end are:

- the highly developed and patented rotor profile with precision ground 5/6 lobe configuration that provides higher compressed air output with lower power consumption;

- the oversized high precision bearings;
- the compensation springs;
- the special channels machined into the rotor offering improved lubrication and longer service life to the air end;
- the toothed safety washer and special locking nut for improved reliability.

PATENTED ABAC DESIGN



“MC2” CONTROLLER



THE ENCAPSULATED AIR END



COMPRESSED AIR TREATMENT

Featuring a backlit display with four lines of twenty digits each allowing extended messages, 5 languages possibility, special functions and/or emergency signaling leds, the MC2 controller also features:

- Possibility to expand the hardware.
- Possibility to interface with other compressors, multicontrol boards for sequencing compressors, modems, PC etc.
- Daily and/or weekly operation programming up to 4 compressors.
- Possibility of “Remote Control” of the compressor (by cable, by modem) allowing the unit to remotely start and stop.
- The “Autorestart” function, allows automatic start up of the compressor after a power cut.
- Programmed routine maintenance.
- Diagnostic functions at different levels: fault log.
Rotation direction test for main motor and fan.

Each air end in the GENESIS range has been designed and built to offer maximum reliability to users of smaller quantities of compressed air. The compressor air end is located within a special receiver that is internally coated in plastic to protect against corrosion and also provides 3 stages of oil separation. This arrangement reduces considerably the noise level of the compressor and the amount of oil carry over is reduced to an absolute minimum.

The compressed air produced is stored in the air receiver before entering the built-in dryer and filtration. The air is then filtered and dried removing condensate and contaminated particles down to 0,01 micron and the condensation collected via the various means is then passed through a control module allowing a single condensate outlet from the compressor. Finally the high quality dry compressed air is available to the system and thus less maintenance, longer life and better performance is achieved with all of the equipment used within the compressed air system.

GENESIS

The original one.... imitated, never duplicated. The 18 points making the difference:

- 1 Encapsulated "VT" air end
- 2 Electric motor (IP 55)
- 3 "MC 2" controller
- 4 Air dryer featuring pre-filter 3 μ m, final filter 0,01 μ m and by-pass valve
- 5 Noise level from 63 to 66 dB(A)
- 6 Maximum working pressure 15 bar
- 7 Electric fan with thermostatic control
- 8 Electronic condensate drain
- 9 Air receiver* (internally protected)
- 10 Transducer
- 11 Star-delta starter
- 12 Intake valve
- 13 Oil filter
- 14 Oil separator filter
- 15 Oil cooler
- 16 Intake filter
- 17 Minimum pressure valve
- 18 Fill of mineral oil

*Available with 275 or 500 Lt receiver



Easy to use

Self diagnostic

Extremely quiet

Compact in size

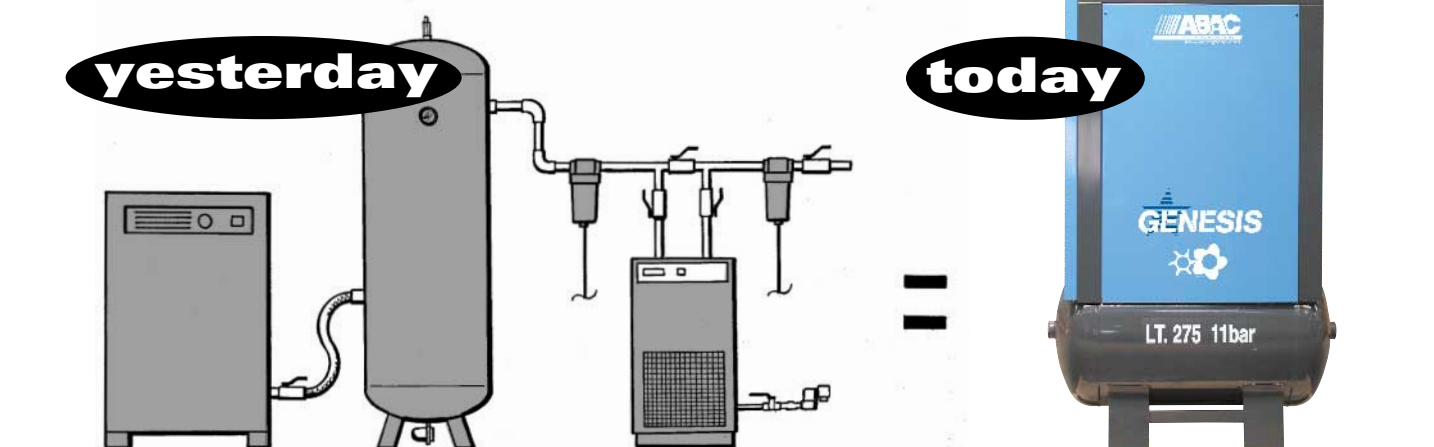
Filtered, clean and dry air

**Low maintenance
economical operation**

A true compressed air work station, providing clean and dry air, in less than one square meter of floor space

Traditional installation

Genesis



INNOVATION

A single, compact and complete compressed air station replacing the traditional installation with no need for any further equipment. This allows for a considerable reduction in costs and a removal of the risks that may occur due to an incorrect installation.

LOW NOISE

The extremely low noise level 63 dB(A) allows installation directly into the working environment without problems to personnel, even those in the immediate vicinity of the compressor.

MAINTENANCE

The unique design of the encapsulated compressor, along with careful placement of all servicing items to allow ease of access, has resulted in a reduction in service time and therefore a reduction in costs.

DESIGN

The GENESIS, though an industrial heavy duty machine features simple, proportional and aesthetic design and is an attractive inclusion in any working environment.

INSTALLATION

Ease of manoeuvrability is achieved thanks to a specially designed arrangement to the compressor base which allows for the use of a standard pallet or forklift truck when positioning or moving the compressor. Simply connect GENESIS to the electric and compressed air distribution network and the compressor is ready for use.

AIR QUALITY

GENESIS includes all of the accessories required to provide dry and clean compressed air for any type of application, from the small workshop to the most sophisticated industrial process.

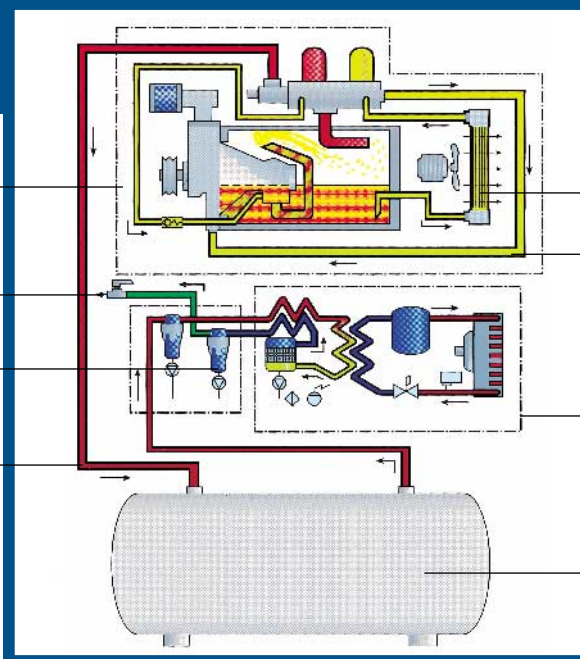
Air/oil circuit

Encapsulated air-end

Compressed air outlet, dry and purified at 0,01 micron

Compressed air filtration

Air circuit



Oil cooler

Oil circuit

Refrigeration air dryer with R134 ecological gas

Air receiver

GENESIS Technical data

Model	Working pressure		Free air delivered *		Motor		Air receiver capacity LT	Noise level dB(A)**	Dimensions mm lengh. x width. x height.	Weight Kg
	bar	PSI	m ³ min	cfm	kw	hp				
GE 0708-EF-275	8	116	0,82	28,95	5,5	7,5	275	63	1170 x 650 x 1660	375
GE 0710-EF-275	10	145	0,73	25,78						375
GE 0713-EF-275	13	188	0,59	20,83						385
GE 0715-EF-275	15	217	0,45	15,89						385
GE 1008-EF-275	8	116	1,24	43,78	7,5	10	275	64	1170 x 650 x 1660	380
GE 1010-EF-275	10	145	1,04	36,72						380
GE 1013-EF-275	13	188	0,85	30,01						400
GE 1015-EF-275	15	217	0,67	23,66						400
GE 1508-EF-275	8	116	1,67	58,97	11	15	275	66	1170 x 650 x 1660	400
GE 1510-EF-275	10	145	1,42	50,14						400
GE 1513-EF-275	13	188	1,19	42,02						420
GE 1515-EF-275	15	217	1,03	36,37						420
GE 0708-EF-500	8	116	0,82	28,95	5,5	7,5	500	63	1920 x 650 x 1660	430
GE 0710-EF-500	10	145	0,73	25,78						430
GE 0713-EF-500	13	188	0,59	20,83						480
GE 0715-EF-500	15	217	0,45	15,89						480
GE 1008-EF-500	8	116	1,24	43,78	7,5	10	500	64	1920 x 650 x 1660	445
GE 1010-EF-500	10	145	1,04	36,72						445
GE 1013-EF-500	13	188	0,85	30,01						495
GE 1015-EF-500	15	217	0,67	23,66						495
GE 1508-EF-500	8	116	1,67	58,97	11	15	500	66	1920 x 650 x 1660	462
GE 1510-EF-500	10	145	1,42	50,14						462
GE 1513-EF-500	13	188	1,19	42,02						500
GE 1515-EF-500	15	217	1,03	36,37						500

Technical specifications may vary without notice.

* Output measured in accordance with ISO 1217
 ** +/- 3 dB(A) according to ISO3744

WORKING CONDITIONS:
 -Intake air pressure 1 bar
 -Air temperature at intake 20°C

Why choose an ABAC rotary screw air compressor?



Because the ABAC group is a world leader in the manufacture of air compressors satisfying the requirements of all users of compressed air and with a fine history dating back to 1923. The ABAC group employs 1000 people, producing over 1 million air compressor per year at 7 factories situated in three continents. ABAC products are distributed to all 5 continents and to 123 countries.

Because the ABAC group is proud of its reputation for absolute customer focus. ABAC although one of the fastest growing companies in the sector, continues to excel in terms of innovative product design, high quality and complete customer satisfaction.

Because ABAC although a large multi national company, maintain a high level of enthusiasm and dedication from everyone within the company, this ensures that we are not merely a supplier to our customers, but a genuine and committed partner.



cod. 9036189 Printing 05/2002

CUSTOMER SERVICE

A full product support package is available to all of our customers throughout the world. Qualified technical advice and support is provided in strategic locations and in all major countries. Advice on installation, selection, additional equipment, maintenance management and environmental issues is available on request.

Tel. +39 0119246479

Fax: +39 0119246455

e-mail: service@abac.it



ABAC air compressors are manufactured in compliance with:
98/37 CE machinery Directive;
87/404 CE simple pressure vessels Directive;
73/23 CE low voltage Directive;
89/336 CE for electromagnetic compatibility;
2000/14 CE for noise level.



ABAC UK Ltd

Burr Hall - Chiltern View Road
Uxbridge Middlesex UB8 2PF

Tel. 07000 222285 ABACUK

Tel. 01895 258 580

Fax. 01895 258 165

e-mail: enquiries@abac.co.uk

web: www.abac.co.uk

COMPANY
WITH QUALITY SYSTEM
CERTIFIED BY DNV
ISO 9001

Distributor

