



# VT PROGRAM

Rotary screw compressors

Hp 40 - 50 - 60 - 75

# VT Program

- 1 ABAC air-end with "VT" profile
- 2 Electric motor (IP 55)
- 3 "MC 2" controller
- 4 Centrifugal separator and electronic condensate drain
- 5 Minimum pressure valve
- 6 Intake filter
- 7 Pre-filter panel
- 8 Air/oil separator
- 9 Intake valve
- 10 Transmission belt
- 11 Air/oil cooler
- 12 Thermostatic valve
- 13 Oil filter



**Air quality**

**Heavy duty**

**Compact design**

**Easy installation**

**High accessibility**

# Abac rotary screw compressor air end

The screw compressor air end of the "VT" series is designed and built exclusively at the ABAC factories, certified ISO 9001.

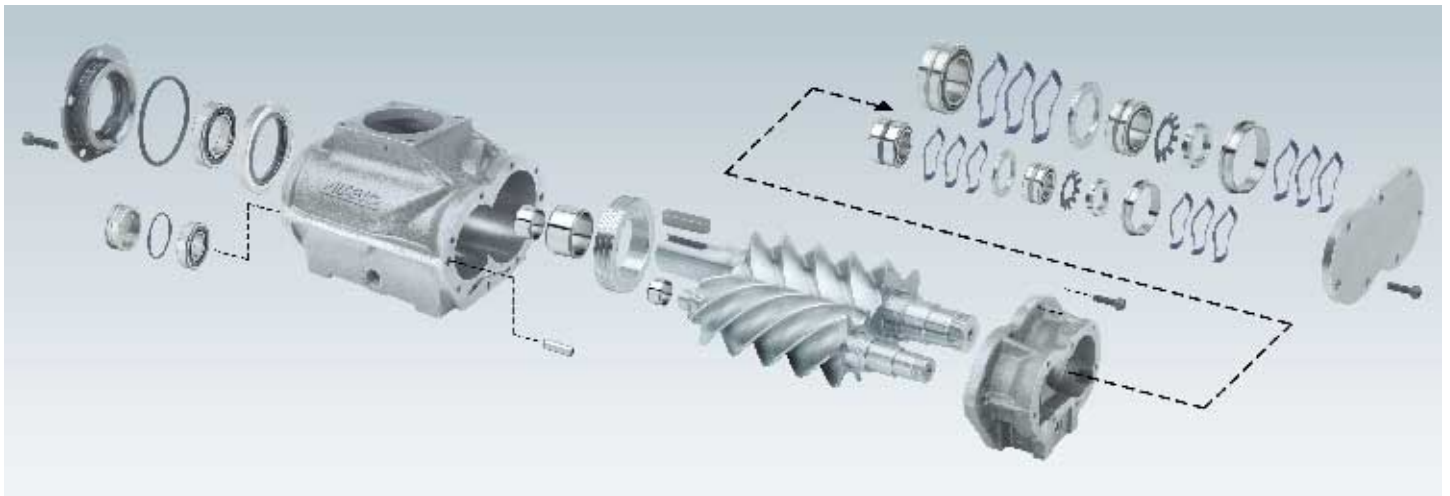
Throughout the manufacturing process the highest quality standards are strictly maintained.

The factors that determine the very high reliability of the VT compressor air end are:

- The highly developed and patented "VT" rotor profile with precision ground 5/6 lobe configuration provides higher compressed air output with lower power consumption.
- Fitted with oversized high precision bearings.

- Compensation springs.
- Special channels machined into the rotor offering improved lubrication and longer service life to the air end.
- Toothed safety washer and special locking nut for improved reliability.

**PATENTED**



## CLEAN INLET AIR

The cabinet on the "VT" compressor is designed to offer protection from the ingress of dirt onto the components within the compressor and also to provide better quality inlet air for compression.

This is achieved by a sealed cabinet that draws ambient air into the compressor through a top mounted panel filter. The air for compression then enters a high efficiency air inlet filter for further cleaning. This facility provides far fewer problems with blocking of coolers etc, and ultimately better quality compressed air.



## ACCESSIBILITY

The "VT" compressor is fitted with easily removable front, top and back panels.

The careful positioning of the normal service components within one area of the cabinet provides ease of maintenance and therefore minimum downtime.

# “MC2” controller

Featuring a backlighted display with four lines of twenty digits each allowing extended messages, 5 languages possibility, special functions and/or emergency signaling leds, the MC2 controller also features:

- Possibility to expand the hardware.
- Possibility to interface with other compressors, multicontrol boards for sequencing compressors, modems, PC etc.
- Daily and/or weekly operation programming up to 4 compressors, allowing up to 4 different start/stop per day, or, when programmed on a weekly basis, up to 3 different start/stop per each day of the week.
- Possibility of “Remote Control” of the compressor (by wire, by modem) allowing the unit to remotely start and stop or, if needed, to control load and unload phases.
- The “Autorestart” function, not allowed by Machinery Directive, can be switched on following a Customer declaration, and it allows to automatically start back-up the compressor after an eventual power cut off.
- Programmed ordinary maintenance.
- Diagnostic functions at different levels: Failures log life. Rotation direction test for main motor and fan.



## STAR/DELTA STARTER

The starter within the “VT” compressor is manufactured from high quality components in accordance with CE standards.

Low voltage control circuit, double insulated main and auxiliary circuit, phase relay (direction of rotation protection) and IP44 enclosure are all standard providing high levels of safety and reliability.



## LOW POWER CONSUMPTION

The “VT” compressor is equipped with a simple ON load/OFF load intake valve.

When the compressor reaches its maximum exercise pressure it will start its timed off load operation and it will automatically stop in case of no further air demand.



## FOUR STAGE AIR/OIL SEPARATION

The “VT” compressor benefits from a very efficient air/oil separation facility. Two stages of primary separation and a further two stages of filtration result in very high quality compressed air with oil carry over inferior to 3 mg/m<sup>3</sup>. In addition low pressure losses are achieved resulting from a larger capacity reservoir and a greater filter cartridge surface area.

# VT PROGRAM Technical data

Model	Working pressure		Free air delivered *		Motor		Air-end type	Noise level dB(A)**	Dimensions mm length. x width. x height.	Weight Kg
	bar	PSI	m <sup>3</sup> min	cfm	kw	hp				
VT 4008	8	116	4,60	162,43	30	40	BA 93	72	1450 x 800 x 1300	500
VT 4010	10	145	4,00	141,24			BA 93			
VT 4013	13	188	3,40	120,05			BA 69			
VT 5008	8	116	6,15	217,16	37	50	BA 93	73	1600 x 1100 x 1450	700
VT 5010	10	145	5,20	183,61			BA 93			
VT 5013	13	188	4,40	155,36			BA 93			
VT 6008	8	116	7,30	257,76	45	60	BA 93	74	1600 x 1100 x 1450	750
VT 6010	10	145	6,30	222,45			BA 93			
VT 6013	13	188	5,40	190,67			BA 93			
VT 7508	8	116	8,50	300,14	55	75	BA 93	74	1600 x 1100 x 1450	840
VT 7510	10	145	7,11	251,05			BA 93			
VT 7513	13	188	6,16	217,51			BA 93			

\* Output measured in accordance with ISO 1217

\*\* +/- 3 dB(A) according to ISO3744

WORKING CONDITIONS:  
-Intake air pressure 1 bar  
-Air temperature at intake 20°C

Technical specifications may vary without notice.

## Why choose an ABAC rotary screw air compressor?



**Because** the ABAC group is a world leader in the manufacture of air compressors satisfying the requirements of all users of compressed air and with a fine history dating back to 1923. The ABAC group employs almost 1000 people, producing over 1 million air compressor per year at 7 factories situated in three continents. ABAC products are distributed to all 5 continents and to 123 countries.

**Because** the ABAC group is proud of its reputation for absolute customer focus. ABAC although one of the fastest growing companies in the sector, continues to excel in terms of innovative product design, high quality and complete customer satisfaction.

**Because** ABAC although a large multi national company, maintain a high level of enthusiasm and dedication from everyone within the company, this ensures that we are not merely a supplier to our customers, but a genuine and committed partner.



cod. 9036187 Printing 05/2002

## CUSTOMER SERVICE

A full product support package is available to all of our customers throughout the world. Qualified technical advice and support is provided in strategic locations and in all major countries. Advice on installation, selection, additional equipment, maintenance management and environmental issues is available on request.

Tel. 01869-326 226

Fax: 01869-326 216

e-mail: [support@abac.co.uk](mailto:support@abac.co.uk)



ABAC air compressors are manufactured in compliance with:  
98/37 CE machinery Directive;  
87/404 CE simple pressure vessels Directive;  
73/23 CE low voltage Directive;  
89/336 CE for electromagnetic compatibility;  
2000/14 CE for noise level.



Abac UK Ltd  
Unit 11, Granville Way  
Bicester, Oxon OX26 4JT

Tel. 01869-326 226  
Fax 01869-326 216  
e-mail: [enquiries@abac.co.uk](mailto:enquiries@abac.co.uk)  
internet: [www.abac.co.uk](http://www.abac.co.uk)



Distributor

